



# YAMAHA

## GENUINE

### Parts & Accessories

## INSTALLATION INSTRUCTIONS 230 Series Cockpit Cover '07 & Up SX/AR230 - '08 232 Ltd.

### ⚠ WARNING

Please read and understand these instructions completely before installation to avoid possible injury to yourself, or damage to the accessory or vehicle.

### CAUTION:

- This installation should be performed by an authorized Yamaha dealer or a qualified mechanic. Some components require information from the model's service manual for proper installation or adjustment. Be sure to have the service manual on hand, if necessary, before proceeding with the installation.

### DEALER:

These instructions contain important information for future reference and *must* be given to the customer.

### WARRANTY INFORMATION:

- Genuine Yamaha accessories are covered by a 1 year warranty against defects in material or workmanship. Labor for replacement of defective components is not covered. See your Yamaha dealer for a copy of the warranty statement.
- The Limited Warranty provided with new Yamaha vehicles has exclusions for certain failures, including those caused by the installation of accessories as well as by abnormal strain or abuse. While installation of these components will not "void" your vehicle's warranty, specific failures adjudged by Yamaha to have resulted from the installation of accessory components or other modifications may not be covered by warranty or Yamaha Extended Service.

### 1. PARTS LIST:

This kit contains the following components. Before beginning installation confirm there are no missing or damaged components.

Part Number	Description	Qty
*	Windshield Clips	29
*	Self-Tapping Clips	26
*	Adjustable Anti-Pooling Pole	1
*	Canvas Cover	1
*	Instruction Set	1

\* Part supplied with kit only and not available separately.



Cockpit Cover shown on a 2008 SX230 High Output

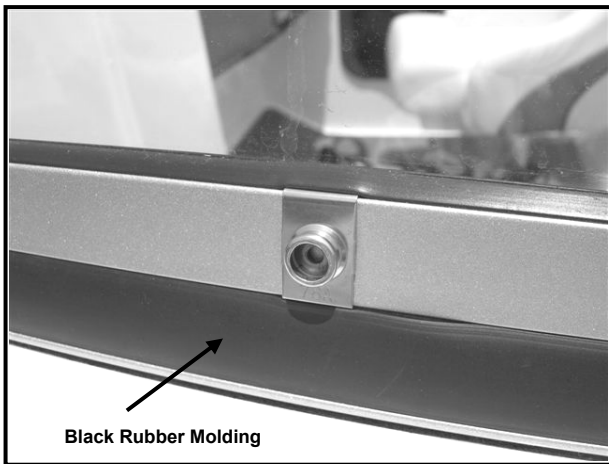


Fig. 1

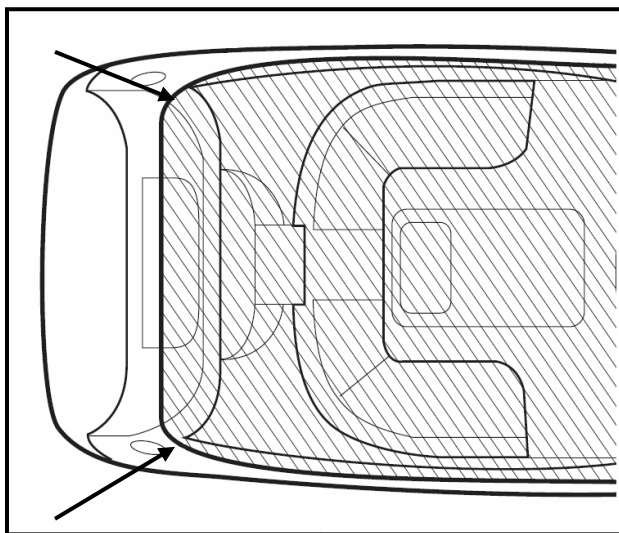


Fig. 2

## 2. PREPARATION:

- Place Boat and Trailer on a secure level surface. Chock trailer wheels to prevent movement.
- Clean all mounting surfaces before beginning installation.

## 3. INSTALLATION:

- Find the front center of the canvas and install three windshield clips to the center windshield, using the rubber windshield bumper cutout and the center seam as a locator. (Fig. 1 shows proper snap installation)
- Beginning at the front center of the cover, begin filling in windshield snaps, pulling the cover taut as you move back. Do three or four on the right side, then the left and so on to the back of the windshield.

### **Note:**

Prior to installing the windshield clips, you may want to remove the black windshield rubber molding (See Fig. 1), then reinstall after all windshield snaps are in place.

- Pull the canvas taut back and locate the rear corner snaps. (Fig. 2)

### **Note:**

Using a helper, ensure the two rear corner snap locations are evenly spaced below the body line of the deck before drilling pilot holes.

- Using a 1/8" drill bit, drill a pilot hole at the marked locations.
- Install self-tapping snaps using a #2 phillips screwdriver.
- Continue install the remaining self-tapping snaps in a similar manner as the windshield, starting from front to back, installing three or four at a time.
- Adjust the pooling pole height to lift the center part of the Cockpit Cover about 2" and snap in place.

## 4. CARE AND CLEANING:

Wash using a mild soap and water solution. Renew the water repellent characteristics with Yamaha High Tech Fabric Guard (ACC-FABRC-GA-RD).

**ESTIMATED TIME TO INSTALL: 0.8 HRS**