

INSTALLATION INSTRUCTIONS

Molded Sun Top Cover Camo

SSV-5UG97-20-00

YXR660FA (Rhino 660)



Please read and understand these instructions completely before installation to avoid injury to your self or damage to the vehicle or accessory.

⚠ WARNING

Please read and understand these instructions completely before installation to avoid possible injury to yourself, or damage to the accessory or vehicle.

CAUTION:

- This installation should be performed by an authorized Yamaha dealer or a qualified mechanic. Some components require information from the model's service manual for proper installation or adjustment. Be sure to have the service manual on hand, if necessary, before proceeding with the installation.
- Alteration of emission-related components constitutes tampering under Federal and State laws and can lead to substantial fines and penalties if used other than in closed-course competition.

Dealer:

These instructions contain important information for future reference and *must* be given to the customer.

Warranty Information:

- Genuine Yamaha Accessory components are covered by a 90-day warranty against defects in material or workmanship. Labor for replacement of defective components is not covered. See your Yamaha dealer for a copy of the warranty statement.
- The Yamaha Limited Warranty provided with new Yamaha vehicles has exclusions for certain failures, including those caused by competition or racing use (except YZ and WR motorcycle models) as well as by abnormal strain or abuse. While installation of these Genuine Yamaha Accessory components will not "void" your vehicle's warranty, specific failures adjudged by Yamaha to have resulted from the installation of accessory components or other modifications, or from competition use (except YZ and WR motorcycle models), may not be covered by warranty or Yamaha Extended Service.

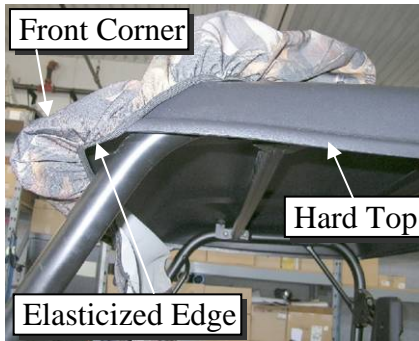
1. Parts List:

Item	Part Name	Description	Qty
1	Sun Top Cover	Rhino Sun Top Cover	1

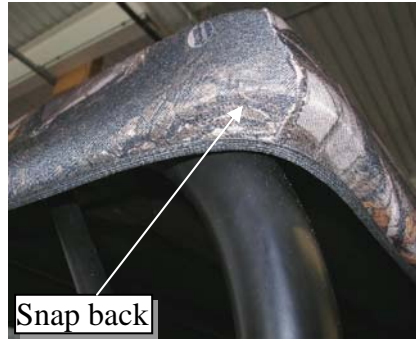
Item #1



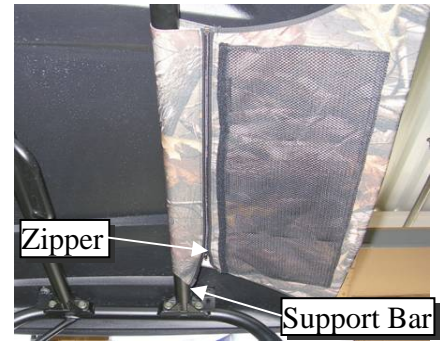
2. Installation:



a) Start on two end front corners of the molded hard top.



b) Pull the elasticized edge over the rear end of molded hard top. Snap back in both at rear side corners.



c) Connect the zipper around the horizontal bar.

3. Maintenance, Care and Cleaning:

- a) Periodically check all fasteners for tightness. Do not store in direct sunlight, use a cover or store in shaded area. Storing in direct sunlight may result in fading of the material. Damage due to fading is not covered under the warranty. Do not machine wash dry. Do not use harsh detergents. To clean, rinse with cold water, and allow to air dry.